

Towards Excellence

REFERENCE
Module / Solution
Europe / North America / Asia Pacific



Mission

As a solar power one-stop solution provider, we are committed to share business with employee and success with partners, enrich the social and economic communities through corporate and individual participation.

Energizer of Your Cleantech Future

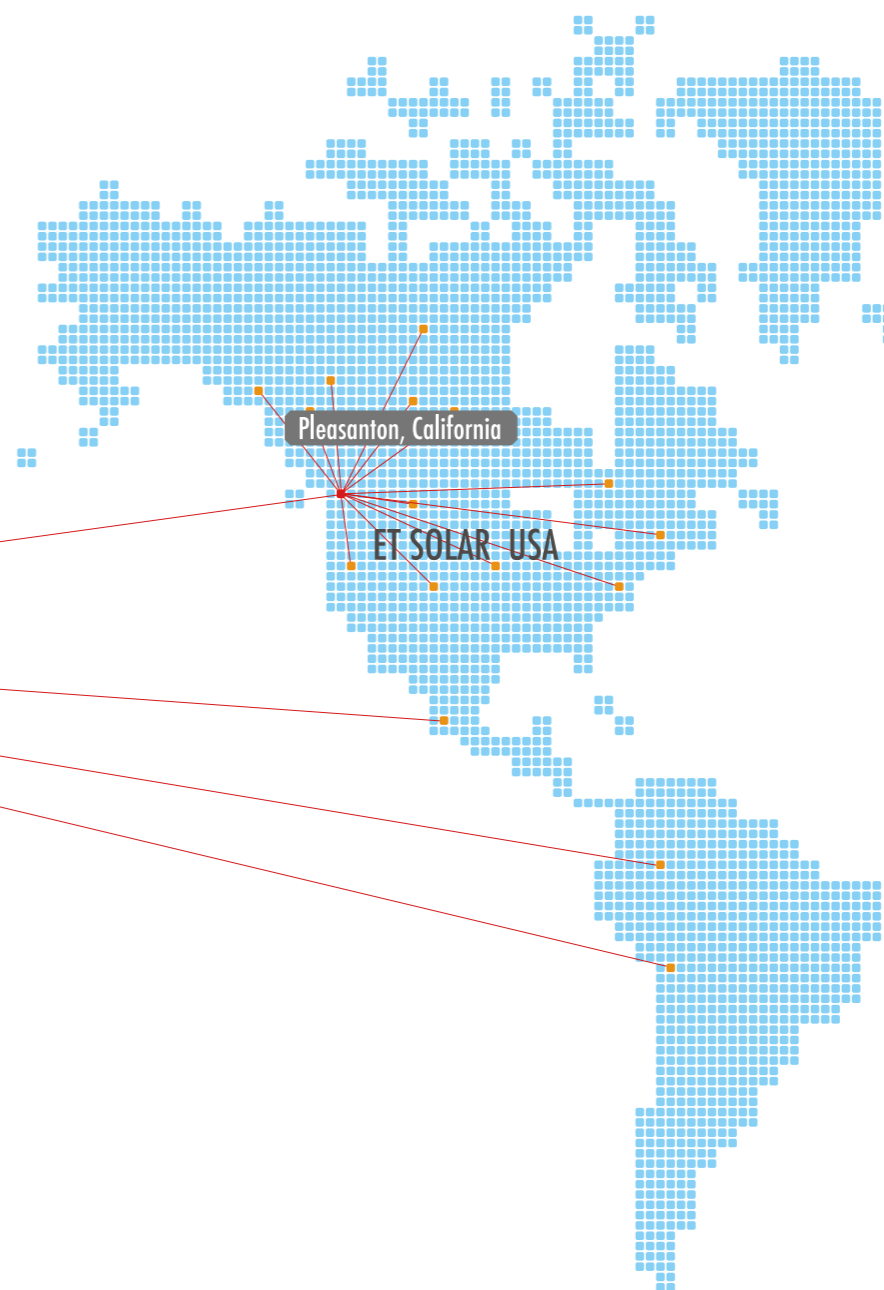
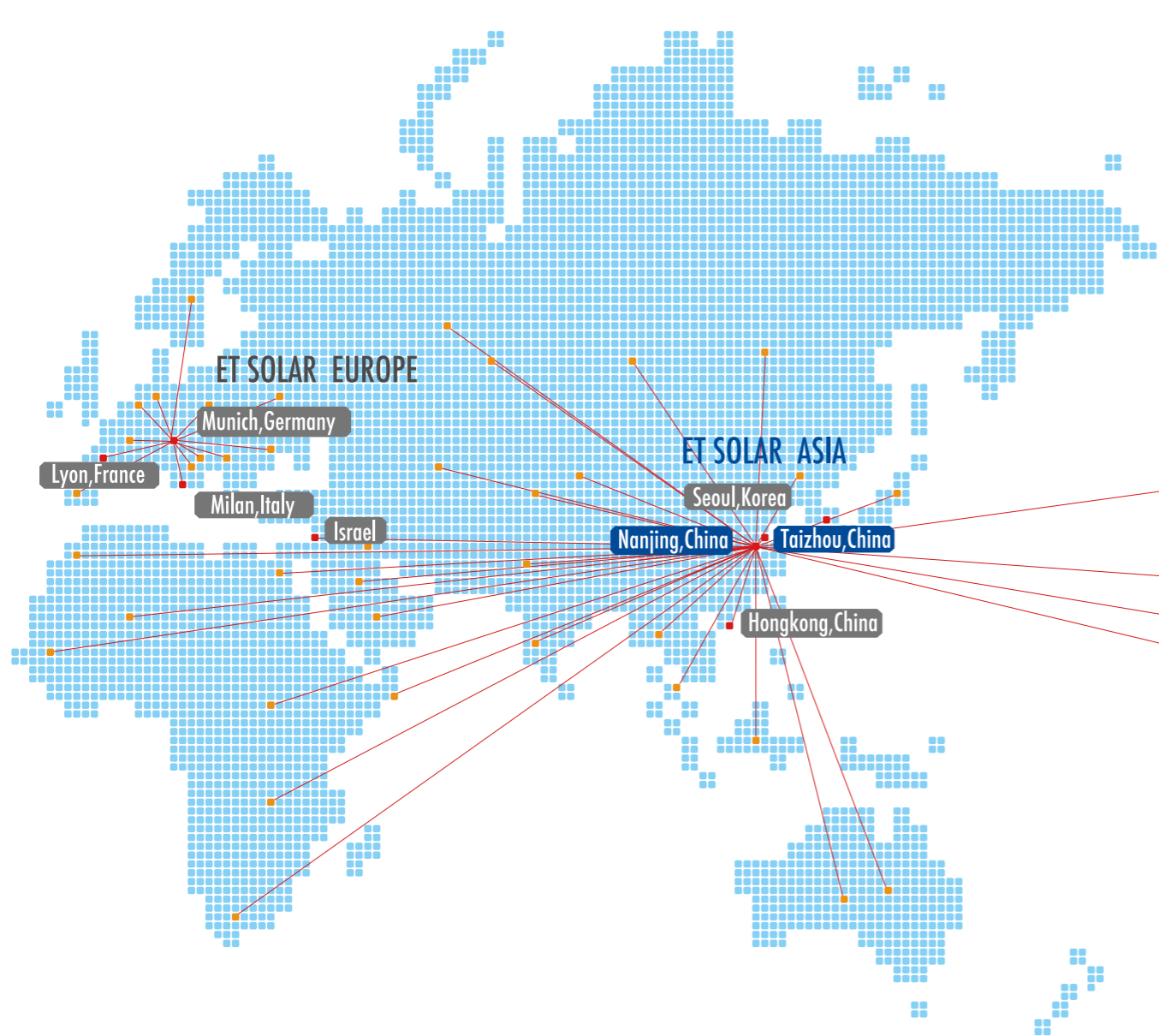
ET Solar is a solar power one-stop solution provider. As a solar equipment provider with local presence throughout Europe, North America and Asia, ET Solar integrated manufacturing capacity includes silicon ingot, cell, module and a variety of BoS component products. In addition to the broad product suite, we also offer high quality and cost efficient turn-key system solutions and services to specialized PV investors. Over the past years, our products were used in a large number of residential, commercial and utility scaled PV projects around the world and demonstrated strong performance in these projects. Our fast growth trajectory demonstrates our commitment, strength and aspiration to be a significant contributor to the industry's growth in the next few decades.

ET Solar strives to ensure excellent product quality and stable product performance. With application of German manufacture technology, ET Solar guarantees the products a high degree of stability and reliability in its lifetime. Moreover, anti-corrosions technology as well as high-quality materials and components are applied in the manufacturing process. ET Solar provides customers with anti-water, pressure resistance, corrosion resistance products with long service life. Our strict quality control ensures the compliance with ISO and globally recognized quality standards such as IEC, TÜV and UL. The ET products possess 25-year linear power performance warranty and 10-year warranty on material and workmanship.

ET Solar manufactures high quality ingot, cell and module/BIPV products and offers a wide variety of BoS component products ranging from tracking systems, residential rooftop kits, to power cabinets for residential, commercial and utility customers in more than 50 countries and regions.

Our diversified product portfolio and growing capability on turnkey solution services differentiate us strongly from a pure module product supplier. As a one -stop solution supplier for solar energy, we own more than 7 years of professional experiences. The enterprise occupies more than 2,800 employees. ET Solar offers high-quality modules, inverter, BIPV, PV Kit and other solar products in more than 50 countries and regions in the whole world. Worldwide more than 1.2GW projects are already finished. In addition, we have set the branches in Germany, France, Italy, USA, Israel and South Korea and provided also customized products as well.

ET Solar carries out localization strategy. We have established a global network with local technical and marketing centers in Europe, North America and Asia. Besides, we set local warehouses also in California, Rotterdam, Munich, Rome, Perth and Tel Aviv, which supply our customers with local logistics and 48-hours reaction service.



Module

E u r o p e



Germany

Installation wattage: 2.3 MW

Module type: ET-P660240

Date of on grid: June, 2012

Location: Sachsen, Germany



Germany

Installation wattage: 78.73 kW

Module type: ET-P660235

Date of on grid: December, 2011

Location: Gera, Germany



Germany

Installation wattage: 280 kW

Module type: ET-M572190

Date of on grid: July, 2011

Location: Schifferstadt, Germany



Germany

Installation wattage: 4.8 MW

Module type: ET-M572190

Date of on grid: March, 2011

Location: Harbke, Germany



Germany

Installation wattage: 1.9 MW

Module type: ET-M572185 & ET-M572180

Date of on grid: June, 2010

Location: Katharinenrieth, Germany



Germany

Installation wattage: 2.9 MW

Module type: ET-P654205

Date of on grid: December, 2010

Location: Frankenberg, Germany



Italy

Installation wattage: 3.3 MW

Module type: ET-M572190

Date of on grid: April, 2011

Location: Chignolo, Italy



Italy

Installation wattage: 1.88 MW

Module type: ET-P660220

Date of on grid: August, 2009

Location: Imola, Italy



Italy

Installation wattage: 1 MW

Module type: ET-P672270

Date of on grid: June, 2009

Location: Umbria, Italy



Italy

Installation wattage: 2.08 MW

Module type: ET-P672270

Date of on grid: May, 2009

Location: Prato, Italy



France

Installation wattage: 2.65 MW

Module type: ET-M572190TL

Date of on grid: October, 2011

Location: Cruas, France



France

Installation wattage: 141 kW

Module type: ET-M572180

Date of on grid: November, 2009

Location: l'aube, France



France

Installation wattage: 65 kW

Module type: ET-M572180

Date of on grid: September, 2009

Location: Champagne-Ardenne, France



Belgium

Installation wattage: 99.64 kW

Module type: ET-P660235

Date of on grid: 2012

Location: Waregem, Belgium



Belgium

Installation wattage: 119.7 kW

Module type: ET-P672285WW

Date of on grid: 2012

Location: Beernem, Belgium



Belgium

Installation wattage: 111 kW

Module type: ET-P660250

Date of on grid: 2012

Location: Ruiselede, Belgium



Belgium

Installation wattage: 72 kW

Module type: ET-P660250

Date of on grid: 2012

Location: Brakel, Belgium



Belgium

Installation wattage: 137.04 kW

Module type: ET-P660240

Date of on grid: 2012

Location: Wingene, Belgium



Belgium

Installation wattage: 294 kW

Module type: ET-P660245

Date of on grid: 2012

Location: Kuurne, Belgium



Belgium

Installation wattage: 294 kW

Module type: ET-P660245

Date of on grid: 2012

Location: Pittem, Belgium



Belgium

Installation wattage: 300 kW

Module type: ET-P660250

Date of on grid: 2012

Location: Buggenhout, Belgium



Belgium

Installation wattage: 3.24 kW

Module type: ET-M572180

Date of on grid: January, 2010

Location: Rekkem, Belgium



Denmark

Installation wattage: 201.06 kW

Module type: ET-M572195BB

Date of on grid: 2012

Location: Gedved, Denmark



Netherlands

Installation wattage: 14 kW

Module type: ET-P672280

Date of on grid: January, 2008

Location: Haarlem, Netherlands



UK

Installation wattage: 600 kW

Module type: ET-P660240

Date of on grid: October, 2011

Location: Newcastle City Council, UK



UK

Installation wattage: 38.4 kW

Module type: ET-P660230

Date of on grid: October, 2010

Location: Northampton, UK



UK

Installation wattage: 3.3 MW

Module type: ET-M572185

Date of on grid: October, 2010

Location: South Yorkshire, UK



UK

Installation wattage: 14.4kW

Module type: ET-P660240

Date of on grid: June, 2012

Location: Lewes District, UK

North America



USA

Installation wattage: 276.36 kW

Module type: ET-P660235

Date of on grid: March, 2012

Location: MA, USA



USA

Installation wattage: 276.36 kW

Module type: ET-P660235

Date of on grid: March, 2012

Location: MA, USA



USA

Installation wattage: 138.18 kW

Module type: ET-P660235

Date of on grid: April, 2012

Location: Cap Cod, MA



USA

Installation wattage: 245 kW

Module type: ET-P660235

Date of on grid: September, 2011

Location: MA, USA



USA

Installation wattage: 410 kW

Module type: ET-P672275

Date of on grid: July, 2011

Location: Lansdale, PA



USA

Installation wattage: 180.32 kW

Module type: ET-P660230

Date of on grid: July, 2011

Location: Pleasantville, NJ, USA



USA

Installation wattage: 95.04 kW

Module type: ET-M572180

Date of on grid: July, 2011

Location: Egg Harbor Township, NJ



USA

Installation wattage: 510 kW

Module type: ET-P672275

Date of on grid: August, 2011

Location: Harleysville, PA, USA



USA

Installation wattage: 232 kW

Module type: ET-P660230

Date of on grid: August, 2011

Location: MA, USA



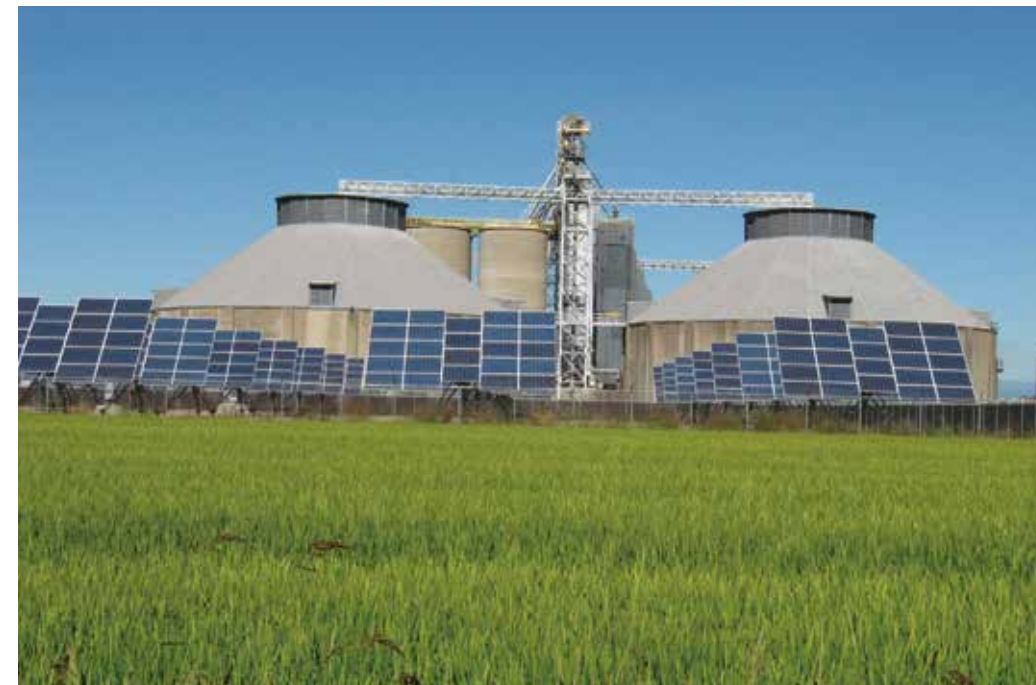
USA

Installation wattage: 53.7 kW

Module type: ET-P672280

Date of on grid: April, 2010

Location: Fort Lauderdale, Florida



USA

Installation wattage: 1.15 MW

Module type: ET-P672275

Date of on grid: October, 2010

Location: Biggs, CA



USA

Installation wattage: 600 kW

Module type: ET-P672275

Date of on grid: January, 2010

Location: Venida, CA



USA

Installation wattage: 574 kW

Module type: ET-M572180

Date of on grid: December, 2009

Location: Ballico, CA

Asia Pacific



Australia

Installation wattage: 20.52 kW

Module type: ET-M572190

Date of on grid: August, 2011

Location: Cairns, Australia



Australia

Installation wattage: 7.98kw

Module type: ET-M572190W

Date of on grid: August, 2011

Location: Brisbane, QLD, Australia



Australia

Installation wattage: 9.62 kW

Module type: ET-M572185

Date of on grid: August, 2010

Location: Mareeba, Australia



Australia

Installation wattage: 8.4 kW

Module type: ET-M572175

Date of on grid: January, 2010

Location: St Patricks School, New South Wales



Australia

Installation wattage: 65 kW

Module type: ET-M572175

Date of on grid: January, 2008

Location: Adelaide, Australia



Israel

Installation wattage: 100 kW

Module type: ET-P654200

Date of on grid: November, 2009

Location: Kfar Hess, Israel



Israel

Installation wattage: 750 kW

Module type: ET-P654200 & ET-P654270

Date of on grid: December, 2009

Location: Maale Gamla, Israel

Solution



Installation wattage: 4 MW

Module type: ET-P660230

Date of on grid: May, 2012

Location: Oberroeblingen, Germany



Installation wattage: 5.621 MW
Module type: ET-P660235
Date of on grid: December, 2011
Location: Rätzlingen, Germany



Installation wattage: 2.9 MW
Module type: ALL ET-P654205
Date of on grid: December, 2010
Location: Frankenberg, Germany



Installation wattage: 2 MW

Module type: ALL ET-M572180

Date of on grid: June, 2010

Location: Katharinenrieth, Germany



Installation wattage: 1.48 MW

Module type: ALL ET-M572175

Date of on grid: December, 2009

Location: Paehl, Germany



Installation wattage: 0.54 MW
Project type: Car port system
Date of on grid: November, 2010
Location: Narni(Terni), Italy



Installation wattage: 2.97 MW
Module type: ALL ET-M572190
Date of on grid: November, 2010
Location: Dubcany, Czech



Headquarters

Add: 27F, Galaxy International Plaza,
7 Shanxi RD, Nanjing, China
Postal Code: 210009
Tel: +86 25 8689 8098
Fax: +86 25 8689 8097



ET Solutions AG (Germany)

Add: Im Munich Central Tower
Landsberger Str. 110-114
D-80339 Munich, Germany
Tel: +49 895009405-0
Fax: +49 895009405-99



ET Solar Inc. (USA)

Add: 4900 Hopyard Road, Suite 290,
Pleasanton, CA 94588, USA
Tel: +1 925 4609898
Fax: +1 925 4609929



ET Solutions s.r.l (Italy)

Add: Via C. Finocchiaro Aprile 14,
20124 Milan, Italy
Tel: +39 02 620227255
Fax: +39 02 6595913



ET Solar France

Add: Tour Part Dieu 129, rue Servient 69326
Lyon Cedex 03, France
Tel: +33 0 4 78 63 79 76
Fax: +33 0 4 72 61 92 65



ET Solar Korea Ltd.

Add: Room 811, Sigma III Officetel,
360-1, Yatap-Dong, Bundang-Gu,
Seongnam City, Kyunggi-Do, Korea.
Tel: +82 070 8876 4131
Fax: +82 31 701 4132



ET Solar Group Israel

Add: 8 Gezer st., Tel Aviv, Israel.
Tel: +972 523 208 543
Fax: +972 77 5631179

Towards Excellence